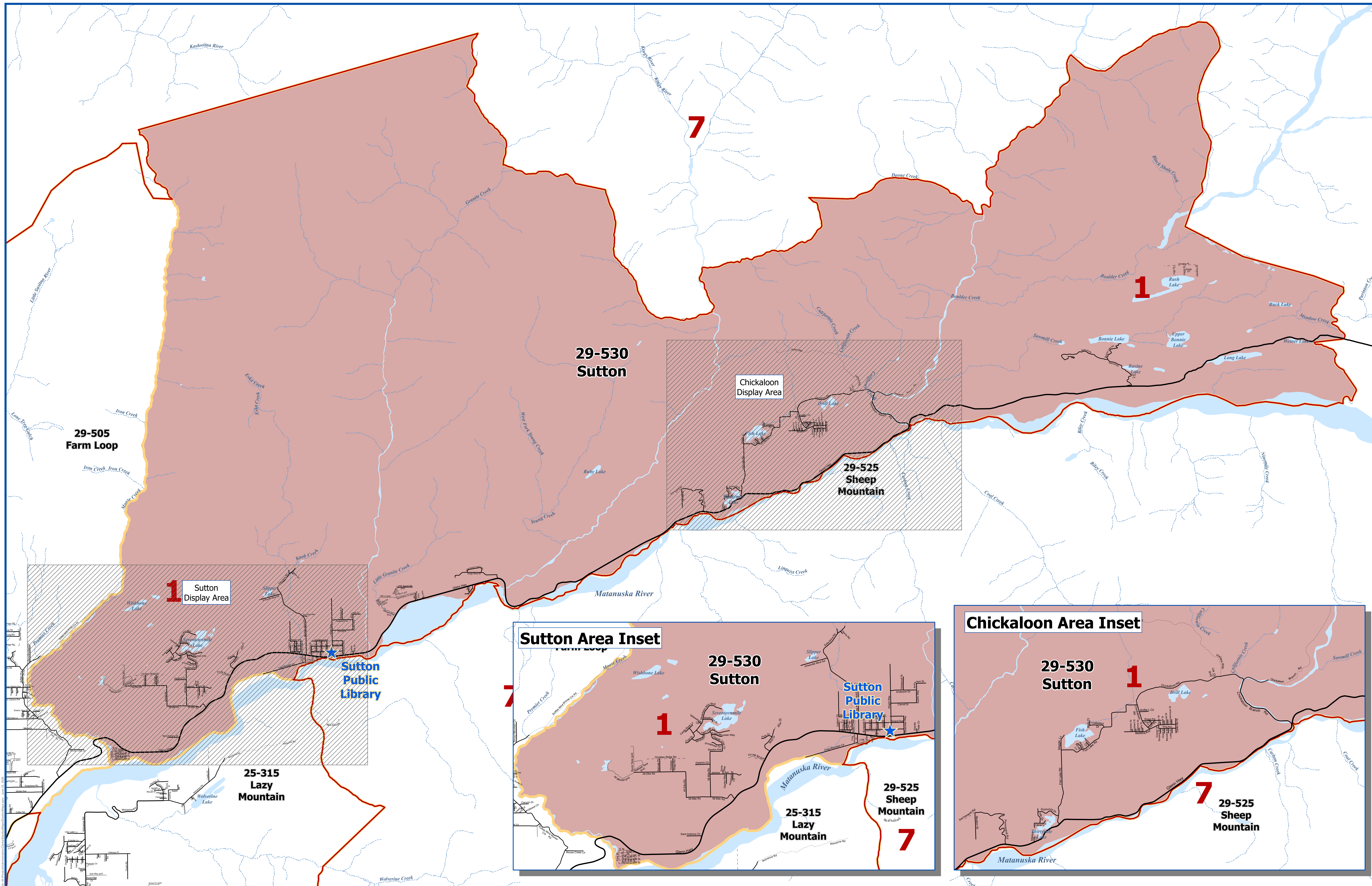
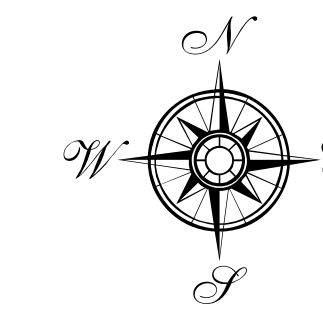




Matanuska-Susitna Borough Voting Precincts



- Polling Location
- City Boundaries
- Voting Precincts
- Assembly District Boundaries
- Matanuska Susitna Borough Boundary
- Highway
- Major
- Medium
- Minor
- Private
- Primitive
- Not Constructed
- Railroad
- Major Waterbodies
- Streams

Precinct # 29-530 Sutton

Poll Location:
SUTTON PUBLIC LIBRARY
11301 N. Chickaloon Way

Prepared by MSB
IT Department - GIS Division
Data Sources: Matanuska-Susitna Borough,
State of Alaska Division of Elections

June 2026
0 0.5 1 2 Miles